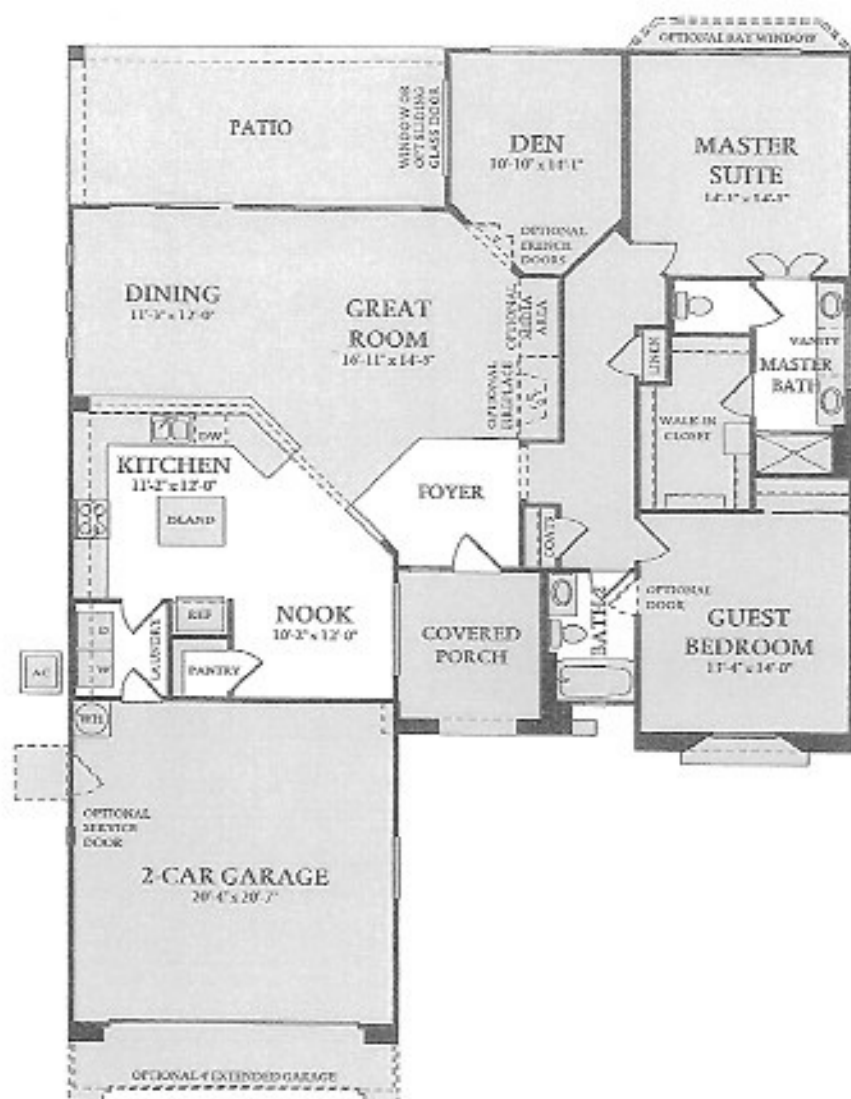


The San Ysidro

GREAT ROOM, BREAKFAST NOOK, 2 BEDROOMS, DEN, 2 BATHS,
2-CAR GARAGE, COVERED PATIO

LIVABLE AREA: 1,811 SQUARE FEET



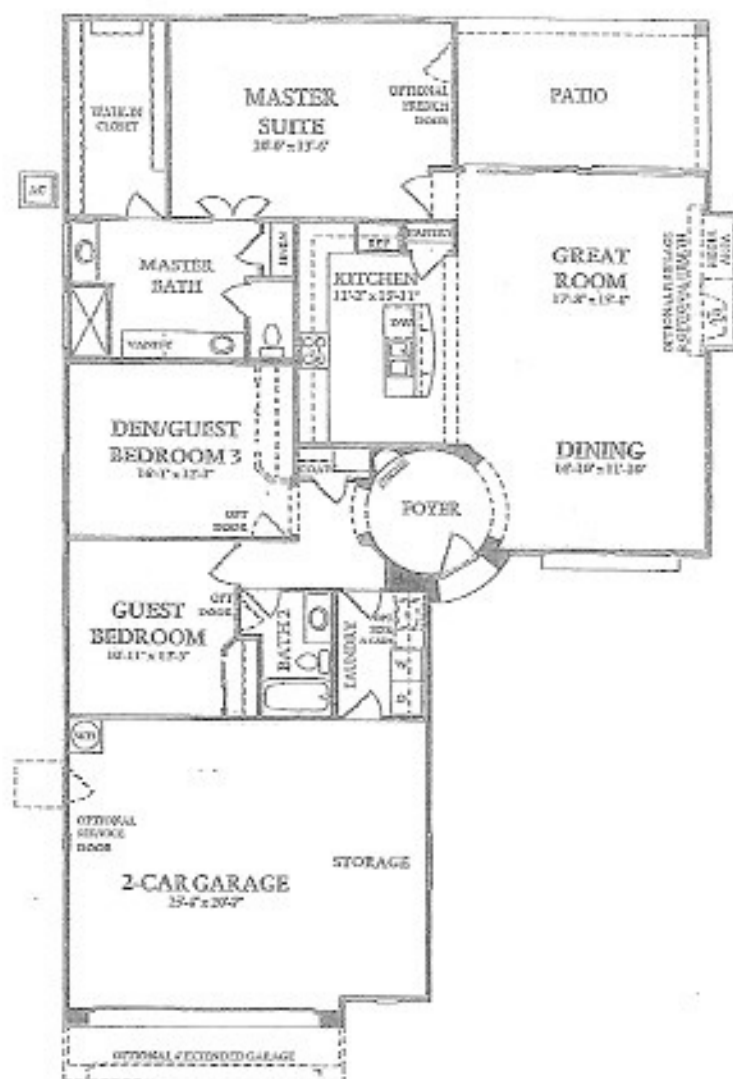
OPTIONAL FULL HEIGHT
OR 4' COURTYARD WALL
WITH GUEST CASITA



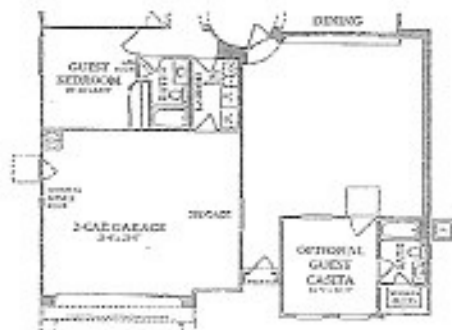
OPTIONAL FULL HEIGHT OR 4' HIGH
COURTYARD WALL WITH GATE OR DOOR

The San Marco

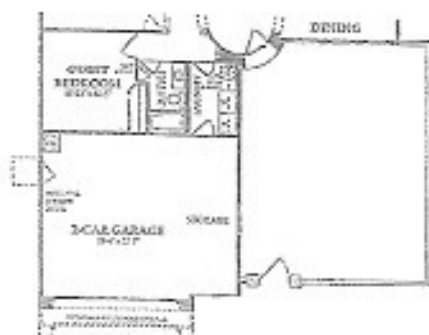
GREAT ROOM, 2 BEDROOMS, DEN, 2 BATHS,
 2-CAR GARAGE WITH STORAGE SPACE, COVERED PATIO
 LIVABLE AREA: 1,904 SQUARE FEET



Opt. LUXURY
 MASTER BATH



OPTIONAL COURTYARD WALL
 WITH GUEST CASITA



OPTIONAL FULL HEIGHT OR 4' HIGH
 COURTYARD WALL WITH GATE OR DOOR